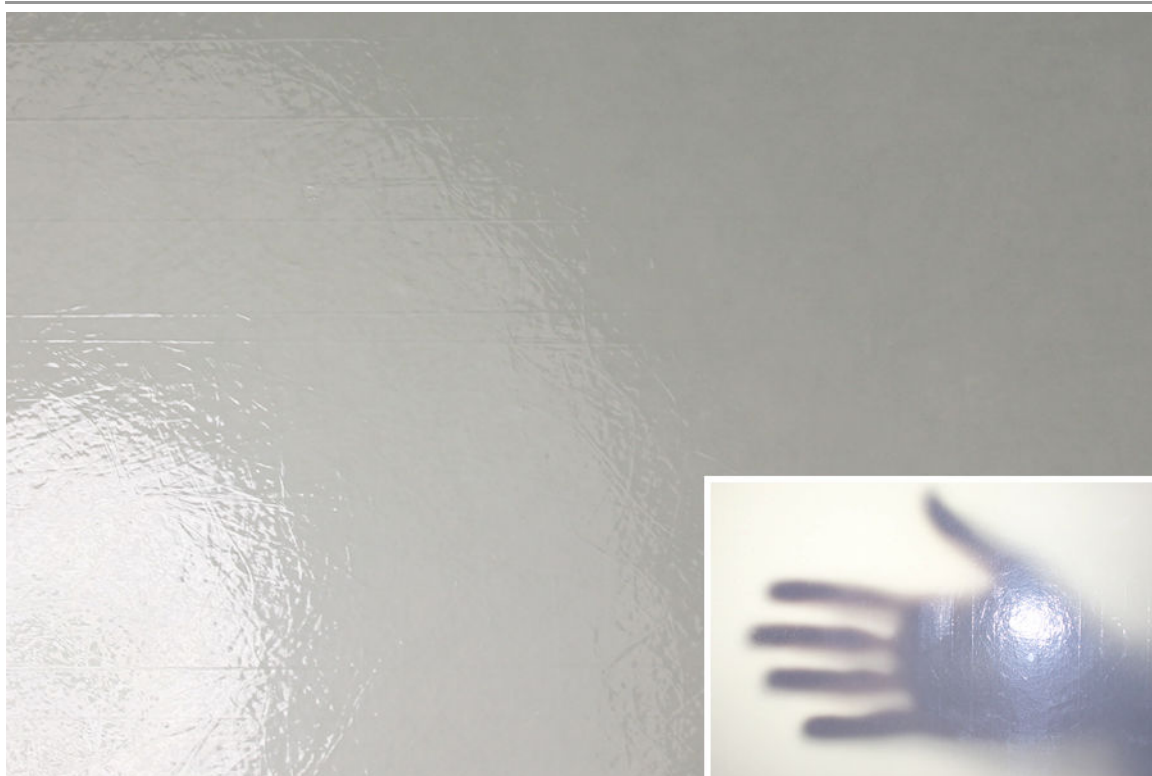


Glimmer Glass Mesh-Reinforced Resin



Specification

| | |
|---------------------|--|
| Inner Core Material | Woven Glass Mesh |
| Outer Core Material | Epoxy Resin |
| Light Transmission | 80 - 85% |
| Fire Rating | Class O as defined by Building Regulations |
| Flexural Strength | (MPa) 353 |
| Thickness | 3mm |

Availability

This product is available in many different forms and can be tailored to individual project requirements.

Typical Applications

Translucent façades, roof lights and signage.

Locker is a UK based supplier of architectural wire mesh products certified to BS EN ISO 9001:2008 and Achilles 'Building Confidence' Level 4.

With comprehensive in house 3D design facilities we are able to offer a complete package from development of the architectural wire mesh specification through design, fabrication, supply and installation of the finished screens.

www.architecturalwiremesh.com

Locker Architectural Ltd, Farrell Street, Warrington, WA1 2WW, United Kingdom
 sales@lockergroup.com Tel: +44 (0)1925 406600 Fax: +44 (0)1925 444386

