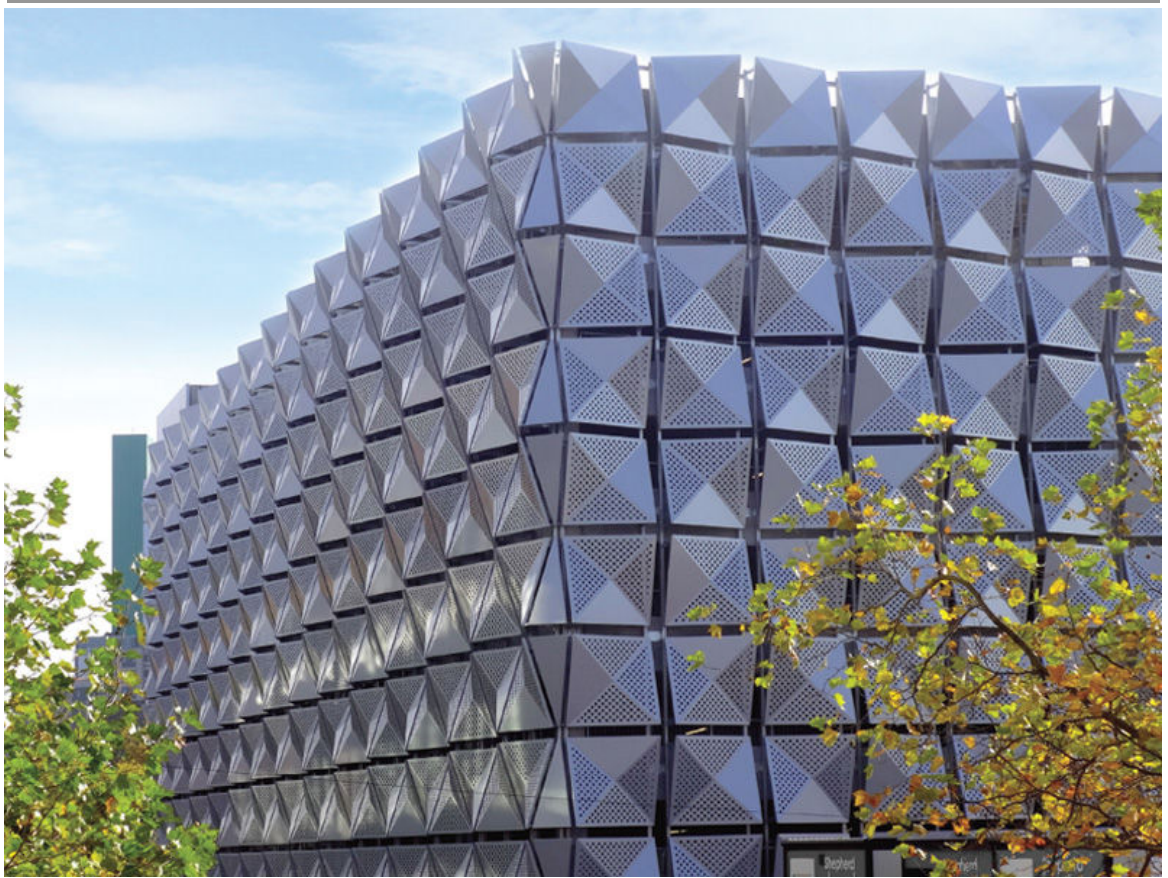


Project: Leeds University Multi-Storey Car Park



Kirkstone perforated metal panels create a unique cladding design with beautiful eye-catching night-time illumination, at Leeds University's innovative multi-storey car park.

Our designers worked in partnership with architect Carey Jones (CJCT) to create the undulating surface precisely designed to achieve the free area required for passive natural ventilation. Adjacent corners share a node point, as one geometric template panel is rotated repeatedly through 90°.

For Wates Group (Shepherd Construction) Locker delivered structural engineering, design, fabrication and installation, plus a green wall tensioned mesh façade to lower floors with supporting mullions, steelwork and bracketry.

The innovative façade structure and high installation quality has resulted in a shortlisting for a RICS award in the 'Design through Innovation' category.



www.architecturalwiremesh.com

Locker Architectural Ltd, Farrell Street, Warrington, WA1 2WW, United Kingdom
 sales@lockergroup.com Tel: +44 (0)1925 406600 Fax: +44 (0)1925 444386

Architectural

